



www.FullerRE.com

COLUMBINE VALLEY OFFICE

6901 S. PIERCE STREET, LITTLETON, CO 80128

OFFICE SPACE FOR LEASE



The Columbine Valley Office Building is a handsome, well-maintained office building located in Littleton. Built in 1985, 6901 South Pierce Street offers low lease rates, beautiful views of the city and mountains, and local ownership that is quick and responsive. Signage is also available on the monument sign on South Pierce Street.

Fuller Real Estate, LLC

303.534.4822
303.534.9021 fax
7921 Southpark Plaza, #108
Littleton, CO 80120

Robert Pipkin
720.287.5410 direct
303.884.1787 cell
bpipkin@fullerre.com

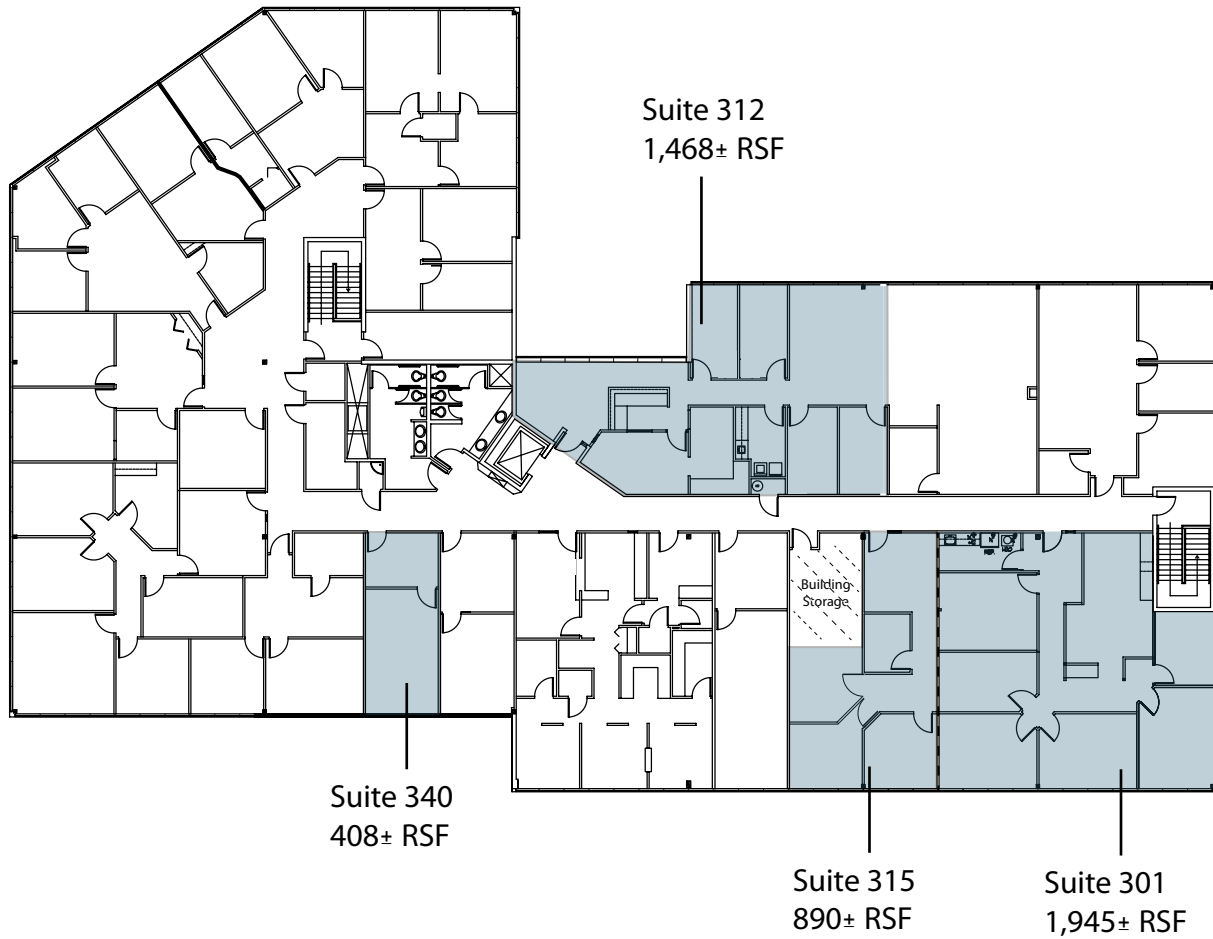
Jeff LaForte
720.287.5409
303.829.2622
jlaforte@fullerre.com

Building Size:	50,403 SF
Term:	3 to 5 Years
Lease Rate	\$17.00 - \$18.00 RSF
Parking:	3.5:1000 Surface, Free
City/County:	Littleton/Jefferson
Amenities:	Kitchen, Vending, Common Conference Room, Walking Distance to Retail & Restaurants





COLUMBINE VALLEY OFFICE BUILDING 3RD FLOORPLAN



SITE LOCATION

